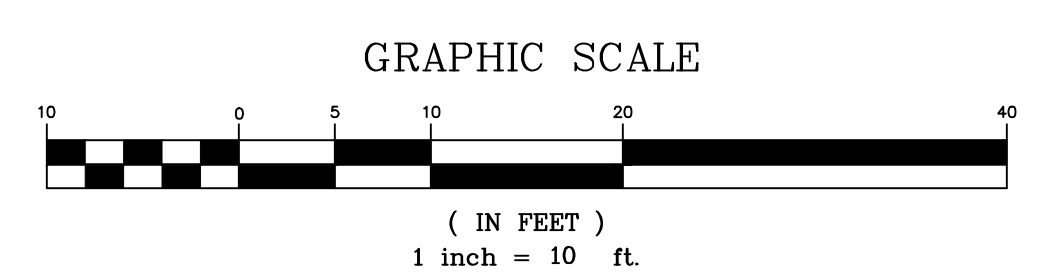
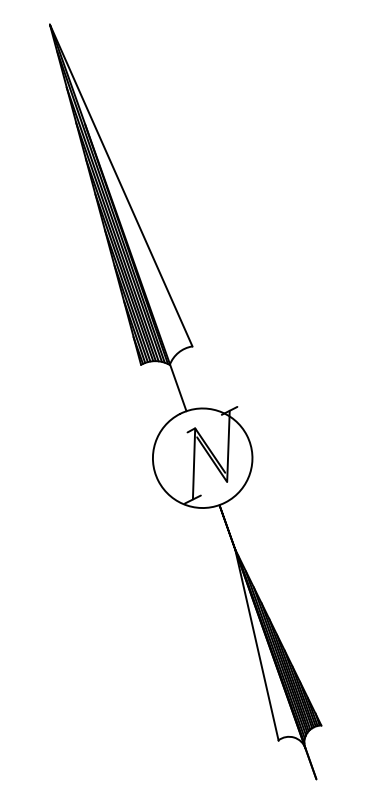


- LEGEND**
- ☐ CABLE TV PULLBOX
 - ☐ CATCH BASIN
 - ⊕ ELECTRIC PULLBOX
 - ⊕ FIRE HYDRANT
 - ⊕ FIRE VALVE
 - ⊕ GAS METER
 - ⊕ GAS VALVE
 - ⊕ MANHOLE (NO I.D./UNKNOWN)
 - ⊕ PARKING METER
 - ⊕ POGE MANHOLE
 - ⊕ POGE PULLBOX
 - ⊕ POWER POLE
 - ⊕ POWER POLE W/ LIGHT
 - ☐ PULLBOX
 - ⊕ SEWER CLEAN-OUT
 - ⊕ SEWER MANHOLE
 - ⊕ SIGN POLE
 - ⊕ TELEPHONE PULL BOX
 - ⊕ TRAFFIC SIGNAL PULLBOX
 - TREE
 - ⊕ UNKNOWN UTILITY
 - ⊕ WATER METER
 - ⊕ WATER VALVE
 - ▨ BRICK
 - ▨ CONCRETE
 - ⋯ CENTERLINE
 - ⋯ OVERHEAD WIRE
 - ⋯ MONUMENT LINE
 - CONC CONCRETE
 - FL FLOW LINE
 - TC TOP OF CURB
 - NTS NOT TO SCALE
 - SW SIDEWALK
 - TW TOP OF WALL
 - HC WHEELCHAIR RAMP
 - CLF CHAINLINK FENCE
 - IE INVERT ELEVATION
 - L/S LANDSCAPING



CITY & COUNTY SURVEYOR'S STATEMENT
 THIS TOPOGRAPHIC SURVEY WAS PERFORMED BY ME OR UNDER MY DIRECTION IN CONFORMANCE WITH THE REQUIREMENTS OF THE PROFESSIONAL LAND SURVEYOR'S ACT AT THE REQUEST OF SFPDW INFRASTRUCTURE DESIGN & CONSTRUCTION DIVISION
 BRUCE R. STORRS, CITY AND COUNTY SURVEYOR
 CITY AND COUNTY OF SAN FRANCISCO
 BY: _____ DATE: _____
 MY LICENSE EXPIRES: SEPTEMBER 30, 2015



| Δ | BY | DATE | REVISIONS |
|---|----|------|-----------|
| | | | |
| | | | |



BUREAU OF STREET USE AND MAPPING
DEPARTMENT OF PUBLIC WORKS
CITY AND COUNTY OF SAN FRANCISCO

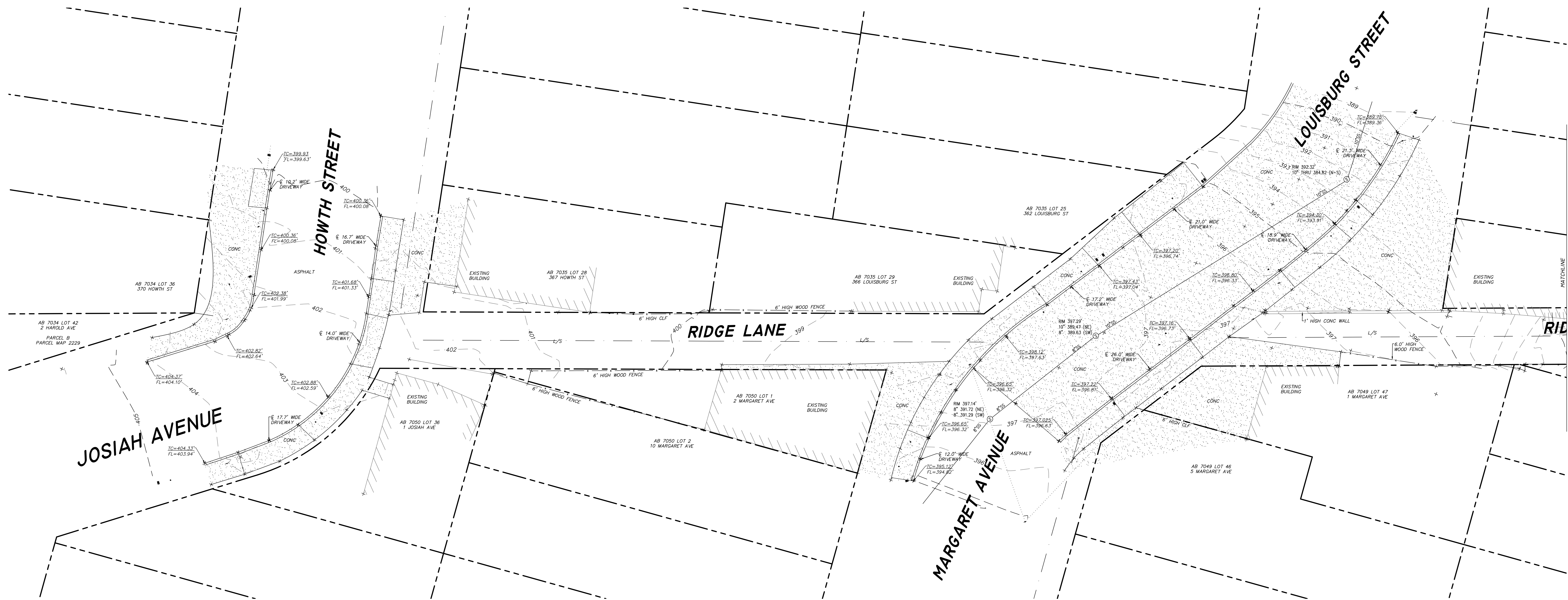
DRAWN BY: CCB
 CHECKED BY: AC
 DATE: 3/17/2014



SCALE: 1"=10'
 PHOTODATE: -

TOPOGRAPHIC SURVEY OF RIDGE LANE
 made for
SFPDW INFRASTRUCTURE DESIGN & CONSTRUCTION DIVISION

TOPODATE: 1/21/14
 JOB#: 2013-99
 AB: 7047-7050,
 7034-7037
 SHEET 2 OF 2



GENERAL NOTES:

- (1) THE NORTH ORIENTATION OF THIS DRAWING IS BASED UPON BEARINGS SHOWN ON THE RECORD OF SURVEY FILED JUNE 3, 2008 IN BOOK 47 OF MAPS AT PAGE 121-122.
- (2) THE ELEVATIONS AND CONTOURS SHOWN HEREON ARE BASED UPON SAN FRANCISCO CITY DATUM. SEE "BASIS OF ELEVATION NOTE."
- (3) THE COORDINATES OF THIS DRAWING ARE BASED UPON CALIFORNIA COORDINATE SYSTEM NAD 83, EPOCH.
- (4) ALL DISTANCES WITHIN THIS DRAWING ARE BASED UPON THE US SURVEY FOOT AND DECIMALS THEREOF AND ARE GROUND DISTANCES.
- (5) SINCE A TITLE INSURANCE POLICY WAS NOT AVAILABLE AT THE TIME OF THIS SURVEY, THE SURVEYOR IS NOT RESPONSIBLE FOR THE OMISSION HEREON OF ANY FACTS SUCH AS, BUT NOT LIMITED TO, THE EXISTENCE OF EASEMENTS, WHICH ARE NORMALLY DISCLOSED BY SUCH A POLICY.
- (6) ABOVE GROUND EVIDENCE OF UTILITIES WAS FIELD LOCATED AND IS SHOWN ON THESE SHEETS. RECORD LOCATION SHOULD BE CONFIRMED BY EXPOSING THE UTILITY. ADDITIONAL VERIFICATION OF THIS INFORMATION SHOULD BE CONSIDERED MANDATORY IF TO BE USED FOR DESIGN PURPOSES.
- (7) ALL CITY MONUMENTS SHOWN HEREON MUST BE PROTECTED PER STATE LAND SURVEYORS ACT AND CITY & COUNTY STANDARDS SPECIFICATIONS SECTION 107.09. PLEASE CALL SURVEYS AT (415) 554-5827 TO REPORT ANY MONUMENTS IN DANGER OF DESTRUCTION OR REMOVAL.

BASIS OF ELEVATION NOTE:

THE ELEVATIONS AND CONTOURS SHOWN HEREON ARE BASED ON A BENCHMARK DESCRIBED AS A CUT CROSS ON THE SOUTH SIDE OF THE LOWER CONCRETE STEP AT THE INTERSECTION OF JOSIAH AVENUE, RIDGE LANE AND HOWTH STREET WITH AN ELEVATION OF 390.771 FEET CITY AND COUNTY OF SAN FRANCISCO DATUM.

CITY & COUNTY SURVEYOR'S STATEMENT

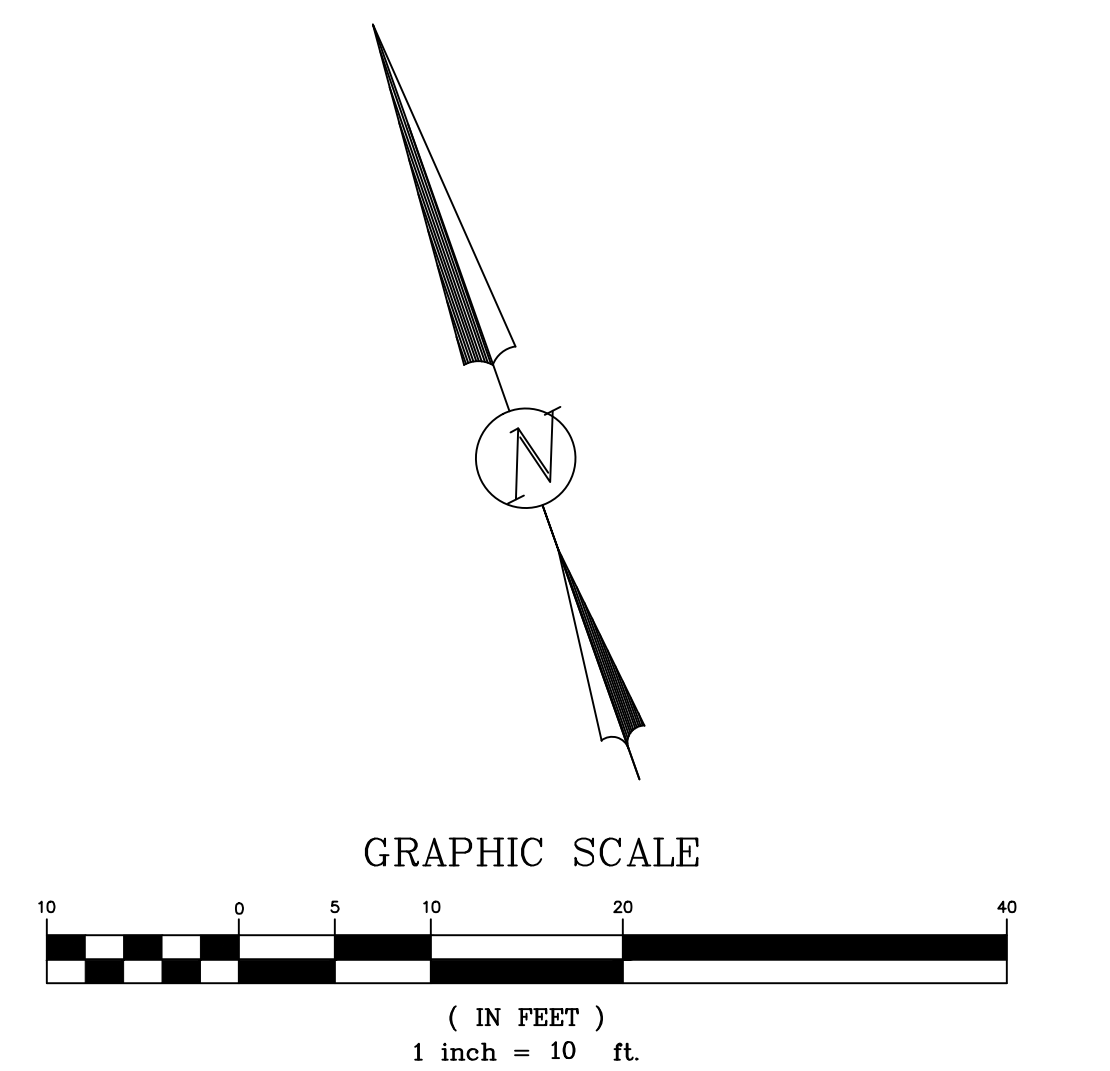
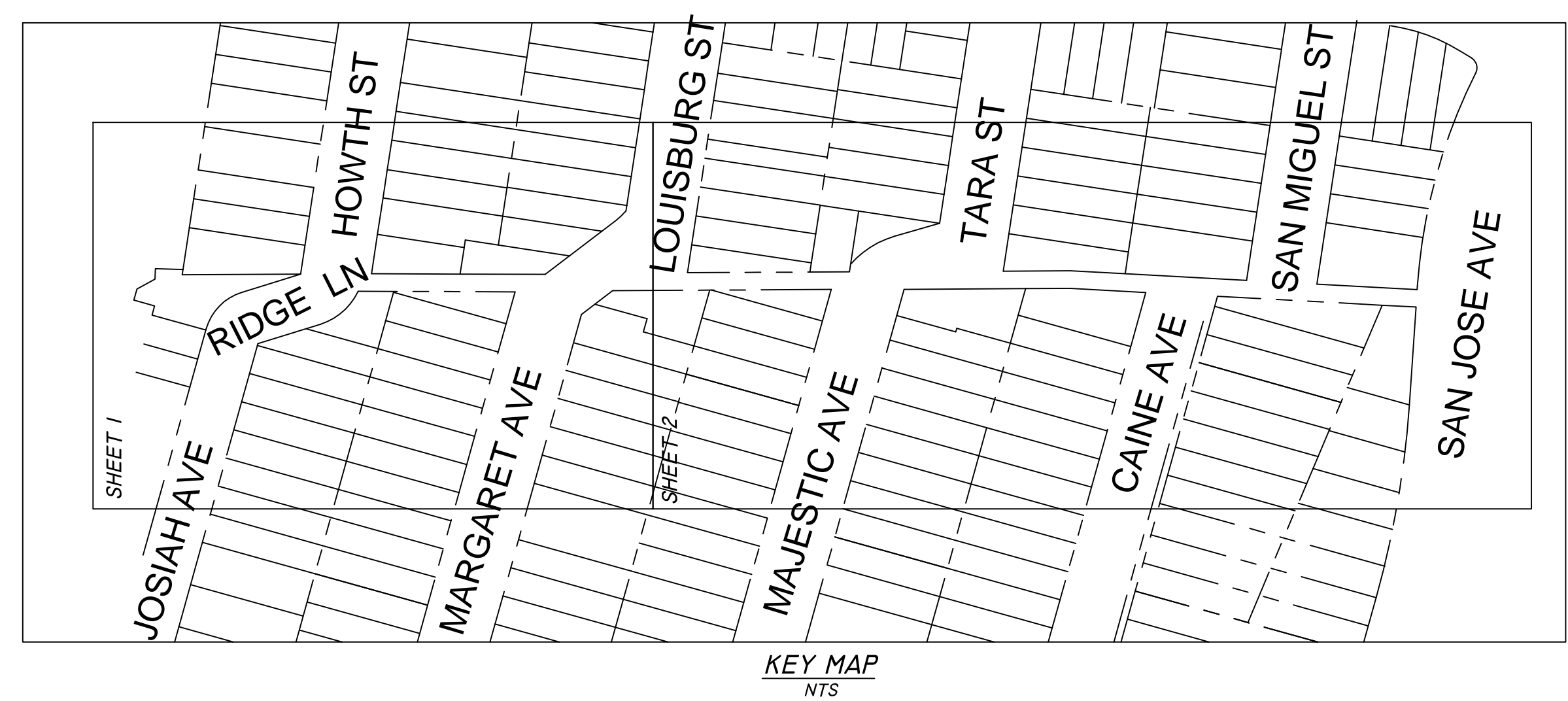
THIS TOPOGRAPHIC SURVEY WAS PERFORMED BY ME OR UNDER MY DIRECTION IN CONFORMANCE WITH THE REQUIREMENTS OF THE PROFESSIONAL LAND SURVEYOR'S ACT AT THE REQUEST OF SDFPW INFRASTRUCTURE DESIGN & CONSTRUCTION DIVISION

BRUCE R. STORRS, CITY AND COUNTY SURVEYOR
CITY AND COUNTY OF SAN FRANCISCO.

BY: _____ DATE: _____
BRUCE R. STORRS, L.S. 6914
MY LICENSE EXPIRES: SEPTEMBER 30, 2015



- LEGEND**
- ☐ CABLE TV PULLBOX
 - ☐ CATCH BASIN
 - ⊕ ELECTRIC PULLBOX
 - ⊕ FIRE HYDRANT
 - ⊕ FIRE VALVE
 - ⊕ GAS METER
 - ⊕ GAS VALVE
 - ⊕ MANHOLE (NO I.D./UNKNOWN)
 - ⊕ PARKING METER
 - ⊕ POB&E MANHOLE
 - ⊕ POB&E PULLBOX
 - ⊕ POWER POLE
 - ⊕ POWER POLE W/ LIGHT
 - ☐ PULLBOX
 - ⊕ SEWER CLEAN-OUT
 - ⊕ SEWER MANHOLE
 - ⊕ SIGN POLE
 - ☐ TELEPHONE PULL BOX
 - ⊕ TRAFFIC SIGNAL PULLBOX
 - TREE
 - ⊕ UNKNOWN UTILITY
 - ⊕ WATER METER
 - ⊕ WATER VALVE
 - ▨ BRICK
 - ▨ CONCRETE
 - ⊕ CENTERLINE
 - ⊕ OVERHEAD WIRE
 - ⊕ MONUMENT LINE
 - CONC CONCRETE
 - FL FLOW LINE
 - TC TOP OF CURB
 - NTS NOT TO SCALE
 - SW SIDEWALK
 - TW TOP OF WALL
 - HC WHEELCHAIR RAMP
 - CLF CHAINLINK FENCE
 - IE INVERT ELEVATION
 - L/S LANDSCAPING



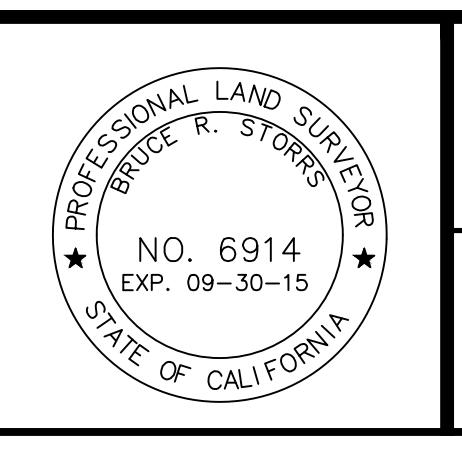
| Δ | BY | DATE | REVISIONS |
|---|----|------|-----------|
| | | | |
| | | | |



BUREAU OF STREET USE AND MAPPING
DEPARTMENT OF PUBLIC WORKS
CITY AND COUNTY OF SAN FRANCISCO

PHONE: 415.554.5827
FAX: 415.554.5324

DRAWN BY: CCB
CHECKED BY: AC
DATE: 3/17/2014



SCALE: 1"=10'
PHOTODATE: -

TOPOGRAPHIC SURVEY OF RIDGE LANE
made for
SDFPW INFRASTRUCTURE DESIGN & CONSTRUCTION DIVISION

TOPODATE: 1/21/14
JOB#: 2013-99
AB: 7047-7050,
7034-7037
SHEET 1 OF 2